

kronospan



Kronospan-MOFA Hungary Kft has become one of the biggest and most modern producers of thin boards of Europe today.

The goal of our company with its products is to fully meet market requirements, the respective standards, as well as customer demands and needs. We produce, sell and distribute medium and high density HDF boards of 2,0–6,0 mm thickness.

We aim to gain customer satisfaction with reliable, competitive products meeting high quality requirements. Our company holds FSC and CARB certifications. To fulfill these ambitions, Kronospan-Mofa is dedicated to continuously improving the quality of its products. Through exceptional control of production, including a focus on the environmental-friendliness of our products, our goal is to provide for a better quality of life with our products and our processes.

Our company is determined to increase the substance and quality of its products and services by several additional values (individual sizes, patterning, cutting-to-size, drilling, folding, etc.).

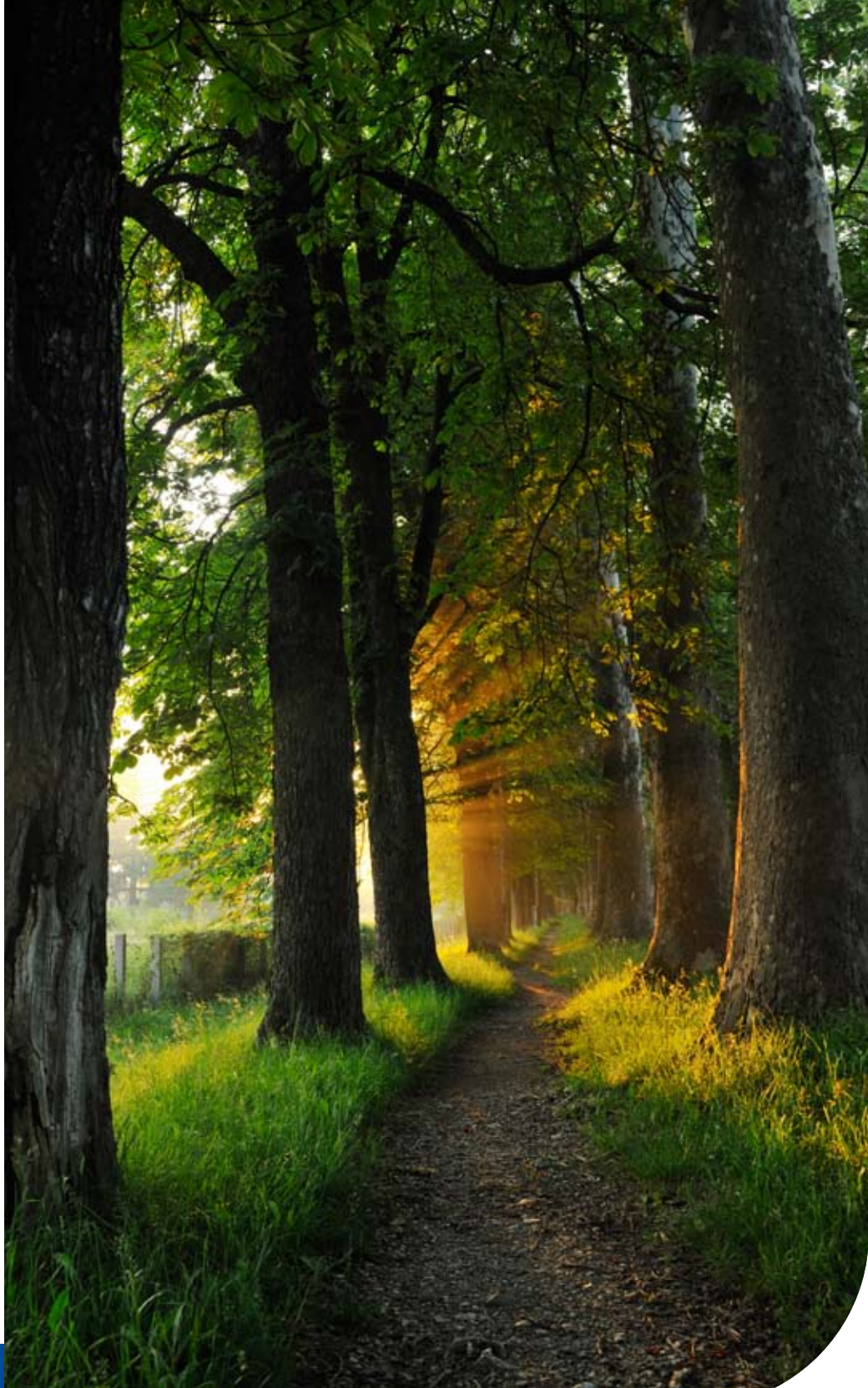
RAW HDF

Characteristics of our raw HDF boards:

- homogenous surface,
- flatness and permanent dimension tolerances,
- constant, reliable quality,
- easy-to-handle surfaces

Fields of application:

- furniture production
- backboards
- frames, edges
- drawer bases
- packaging
- special applications



LACQUERED HDF

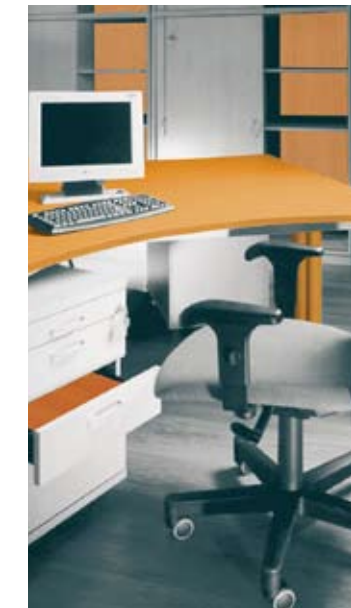
Besides raw boards Kronospan-MOFA Kft also produces and sells HDF boards with lacquer-finished surface. With the roll-lacquering technology we produce unicoloured (UNI) as well as wood-grained lacquered HDF boards of several wood-structures (oak, modern oak, beech, cherry, walnut, pine, anigree, wenge, maple, alder, calvados, plum, fantasy...). Our decors are made with up to 4 colour prints.

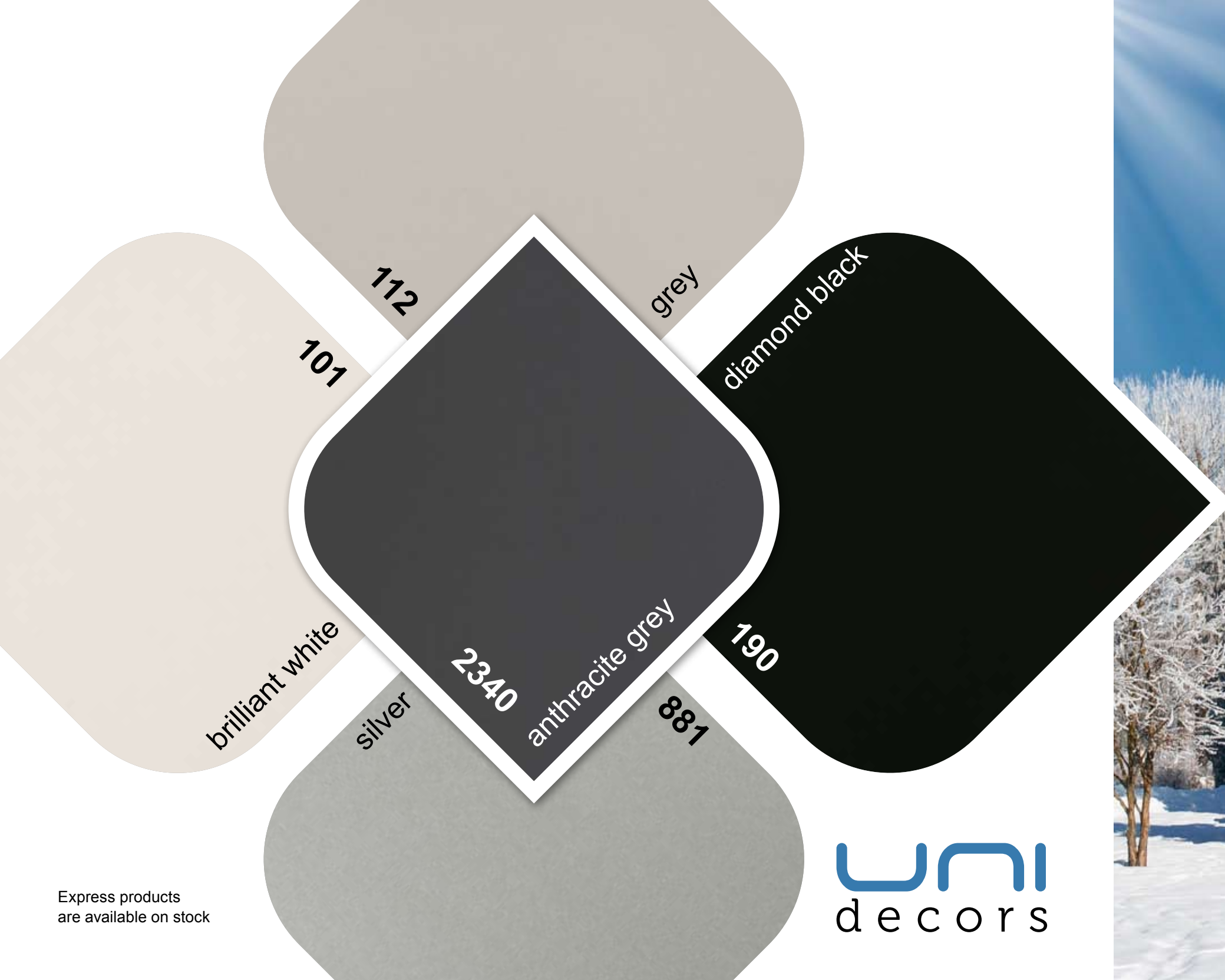
Characteristics of lacquered HDF boards:

- controlled high quality,
- wide selection of structures,
- production of custom colours,
- lacquering on both sides

Fields of application

Lacquered HDF boards can be used in nearly every application for aesthetic surfaces. The main areas of application are: forming open or closed backboards of cabinet furniture, door production, shaping bases for cabinet or bed drawers.





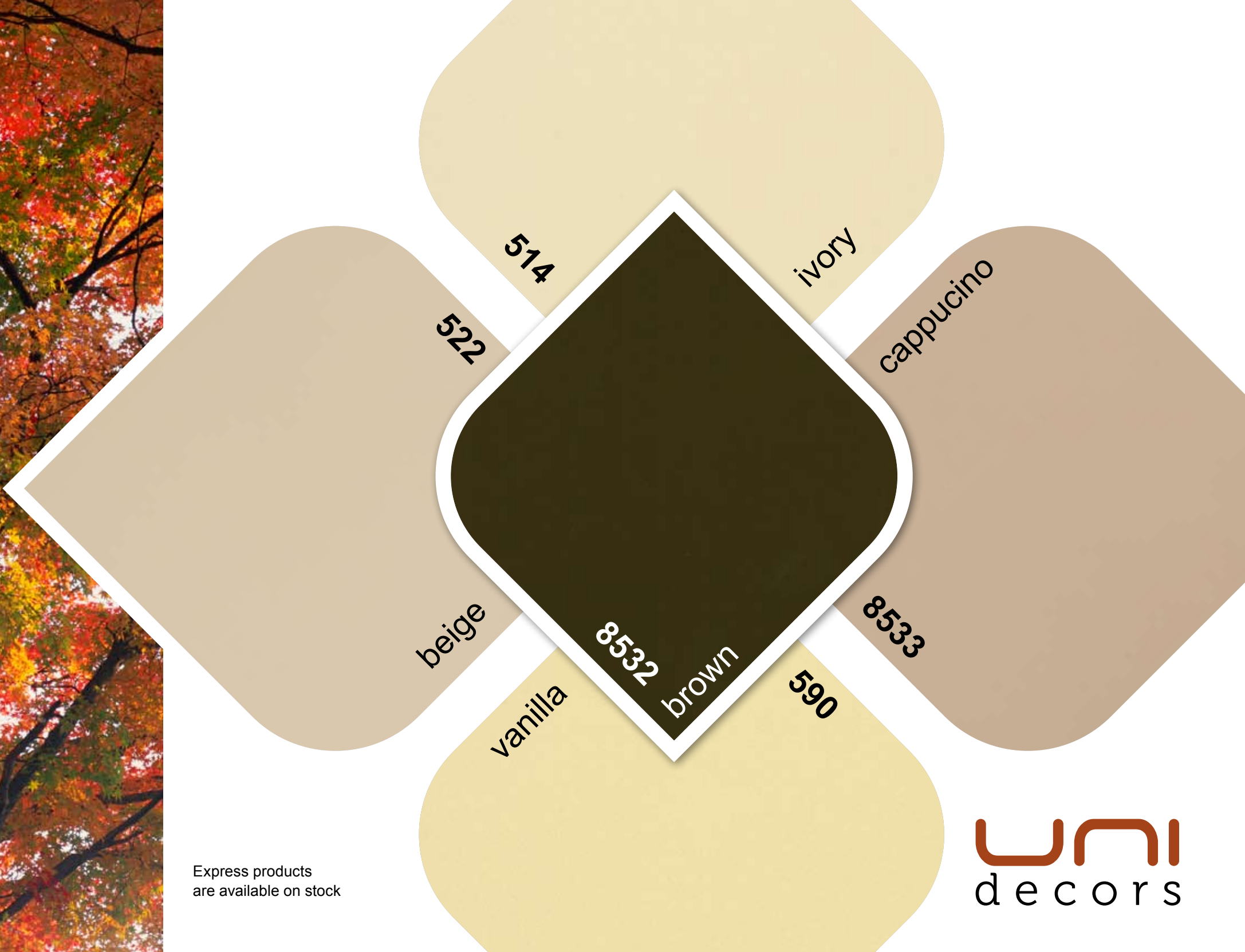
Express products
are available on stock

uni
decors



uni decors

uni decors



Express products
are available on stock

uni
decors



WOOD
decors

Express products
are available on stock



WOOD decors



WOOD decors

walnut • 729

natural oak • 740

calvados • 1792

dark walnut • 3490

Tavolato walnut • 3450

Express products
are available on stock

WOOD
decors

wenge • 5701

plum • 8880

modern oak • 6330

light plum • 8979

WOOD
decors

Express products
are available on stock

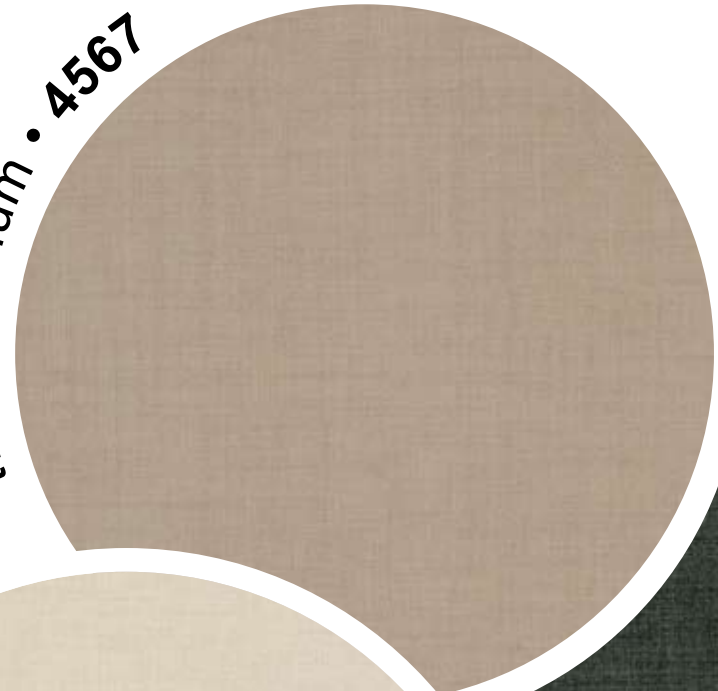
WOOD decors





FANTASY
decors

twist medium • 4567



twist dark • 8436



leaf • 4591



twist light • 8435



Swedish striped silver • 4589



Swedish striped gold • 4588

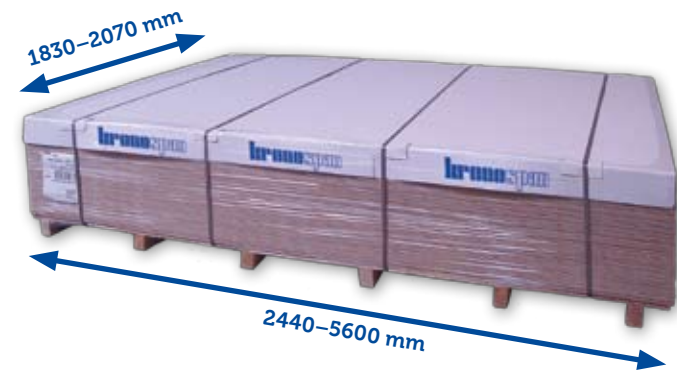


Express products
are available on stock

FANTASY
decors

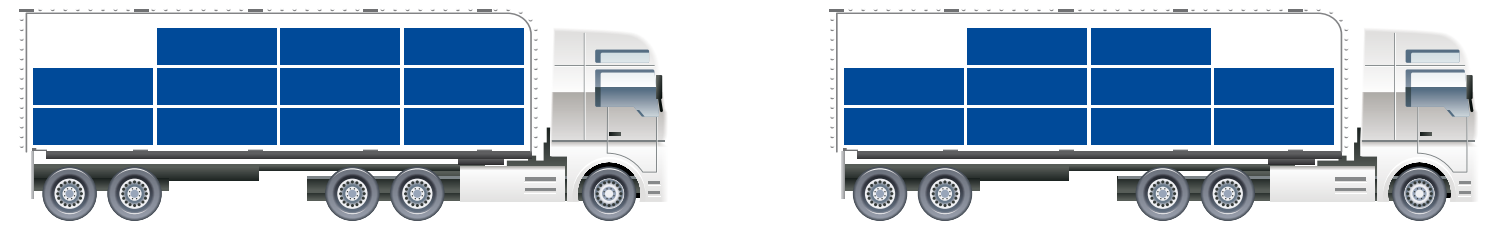
Dimensions:

- Thickness: 2,0–6,0 mm
- Length: ranging from 2440 mm to 5600 mm,
- Width raw: 1830–2130 mm
- Width lacquered: 1830 or 2070 mm



Raw HDF stock program

Thickness	Length	Width	Piece/pallet	Pallet/truck	Kg/pallet
2,5	2800	2070	175	11	2230
3,0	2800	1830	165	11	2230
3,0	2800	2070	160	10	2440
4,0	2800	2070	120	10	2440
5,0	2800	2070	95	10	2420
6,0	2800	2070	80	10	2440



The above weight data include the weight of the loading pallet.
 Attention! The values described above are calculated for 24 tons per truck! Where the 20-ton weight limitation is valid, the above pallet/truck values need to be reduced.

Quality parameters of HDF/MDF board

Parameter	Unit	Requirements			Standards
Thickness	mm	2,0–2,5	2,5–4,0	4,0–6,0	MSZ EN 324-1
Area weight	kg/m ²	2,4- 2,6	2,6 - 3,6	3,6 - 3,8	MSZ-EN 323
Density	kg/m ³	780- 860			MSZ-EN 323
Density tolerance	%	±7			MSZ-EN 323
Thickness tolerance	mm	±0,2			MSZ-EN 324-1
Length/width tolerance	mm/m	±2 (max.: ±5 mm)			MSZ-EN 324-1
Squareness tolerance	mm/m	max.: 2			MSZ-EN 324-2
Straightness	mm/m	max.: 1,5			MSZ-EN 324-2
Thickness Swelling 24h	%	max.: 45	max.: 35	max.: 30	MSZ-EN 317
Bending strength	N/mm ²	min.: 23	min: 30		MSZ-EN 310
Modulus of elasticity	N/mm ²	-	min.: 3 000		MSZ-EN 310
Internal bond	N/mm ²	min.: 0,65			MSZ-EN 319
Surface soundness	N/mm ²	min: 1,0			MSZ-EN 311
Formaldehyde-content (Perforator value)	mg/100 g	≤8 (E1) or <5 (E-LE, Carb Phase 2)			MSZ-EN 120 (IOS - MAT - 0003)
Surface adsorption	mm	150-300			MSZ-EN 382-1
Moisture content*	%	3 - 6			MSZ-EN 322
Sand (grit) content	%	max.:0,05			MSZ ISO 3340

*Value may vary depending on storage conditions

Raw HDF/MDF products conform with EN 622-1, and EN 622-5 norm Table 3 – requirements for general purpose boards for use in dry conditions.

EXPRESS PROGRAMME

HDF lacquered and raw

HDF raw				
dimension (mm)				
2800 x 2070				
2,5	3,0	4,0	5,0	6,0
●	●	●	●	●
2800 x 1830				
3,0				
●				



Legend:

- Products are available in our Express collection on stock.

HDF lacquered				
	decor-nr.	decor name	dimension (mm)	
			2800 x 2070	
			2,5	3,0
UNI	101	brilliant white	●	●
	112	grey		●
	190	diamond black		●
	514	ivory		●
	522	beige		●
	590	vanilla		●
	881	silver		●
	2340	anthracite		●
	8532	brown		●
	8533	cappuccino		●
WOOD	344	cherry		●
	375	maple		●
	381	Bavaria beech		●
	685	alder		●
	708	stained oak		●
	729	walnut		●
	740	natural oak		●
	1792	calvados		●
	3450	Tavolato walnut		●
	3490	dark walnut		●
	5701	wenge		●
	6330	modern oak		●
	8880	plum		●
	8979	light plum		●
FANTASY	4588	Swedish striped gold		●
	4589	Swedish striped silver		●
	4591	leaf		●
	8435	twist light		●
	4567	twist medium		●
	8436	twist dark		●



kronospan

Kronospan–Mofa Hungary Kft.

7700 Mohács, Budapesti országút 72. • T +36 69 529 511, F +36 69 529 539

kronospan-mofa@kronospan-mofa.hu

www.kronospan-mofa.hu



kronospan

www.kronospan-mofa.hu